

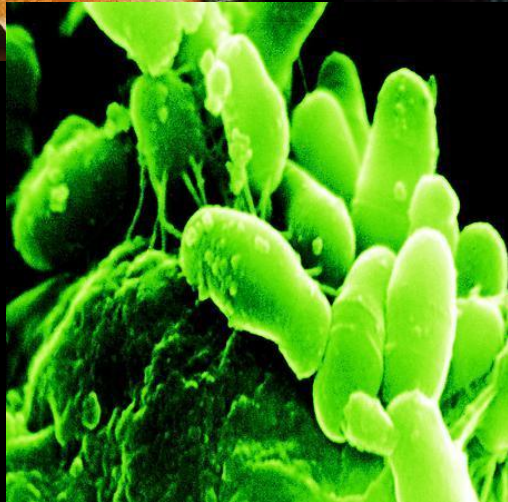
# Darwin and the Theory of Evolution



# Learning Objectives

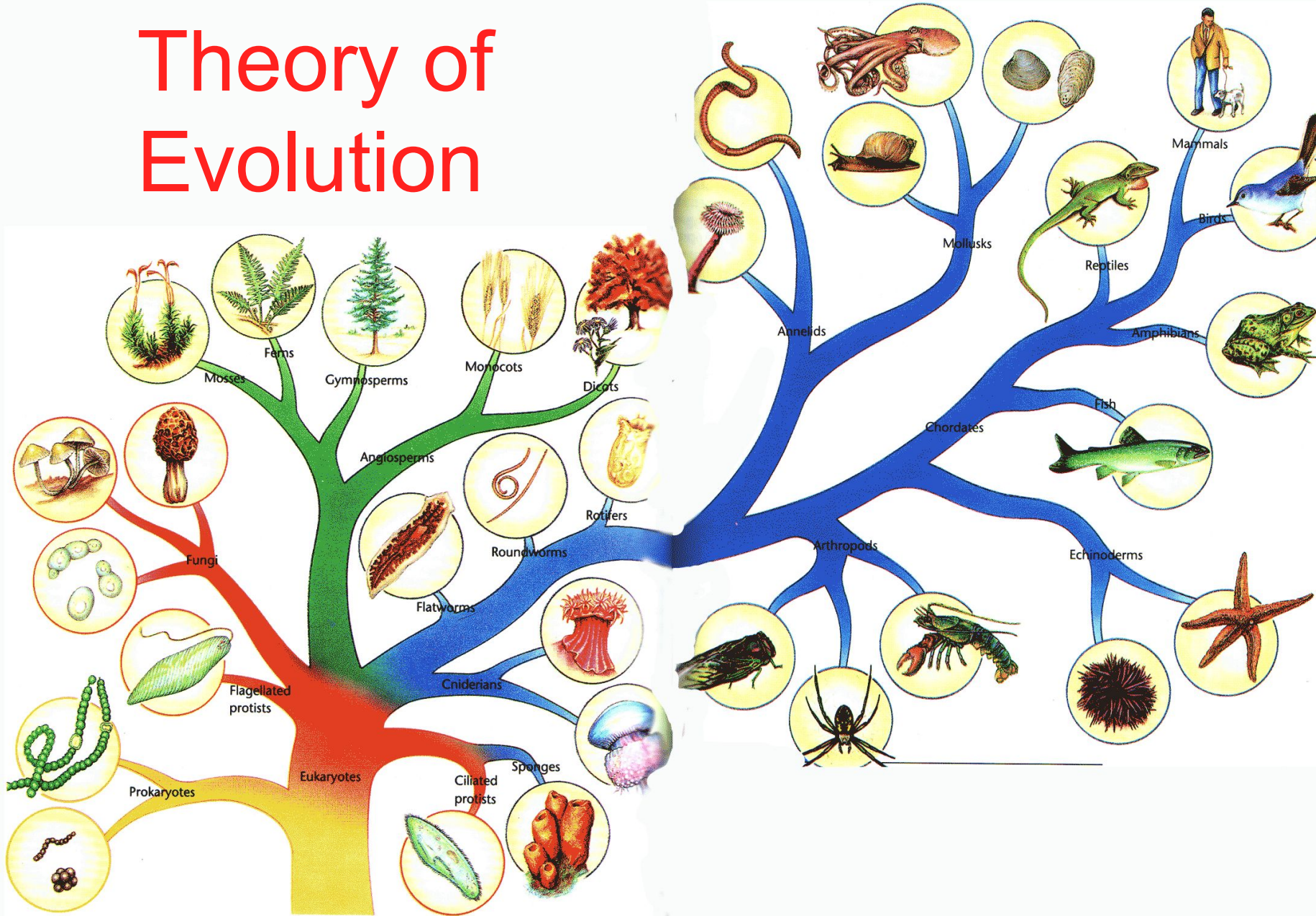
- Describe the pattern Darwin observed among organisms of the Galapagos islands

# Why do we have a variety of life forms?





# Theory of Evolution

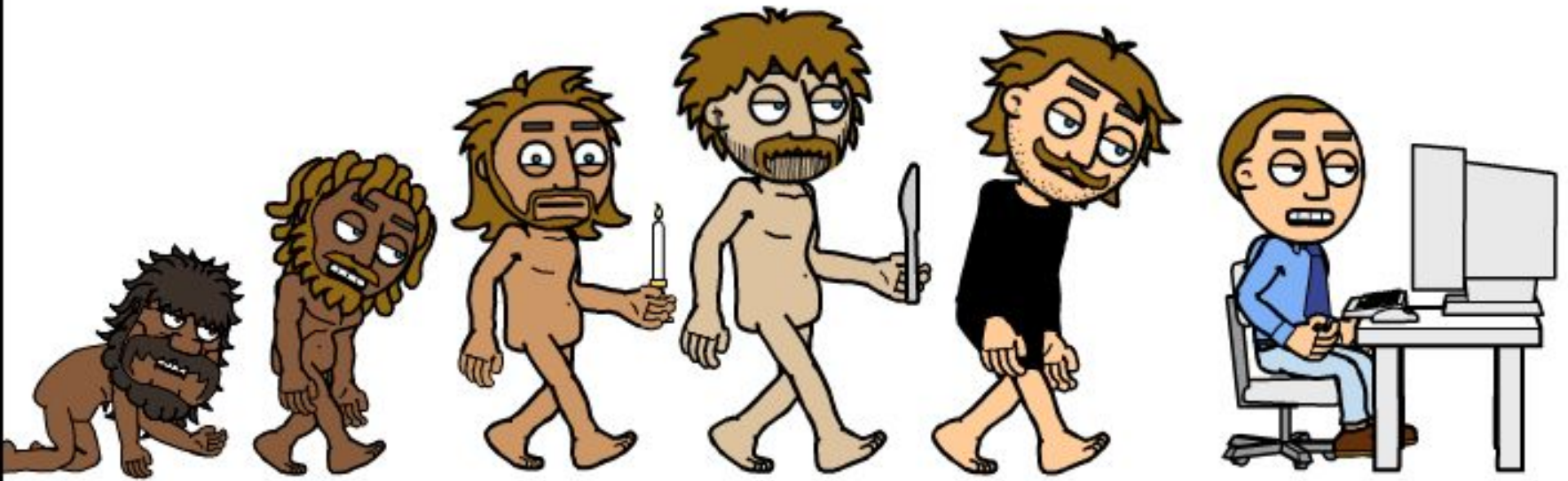


# Tree of Life - Human Evolution



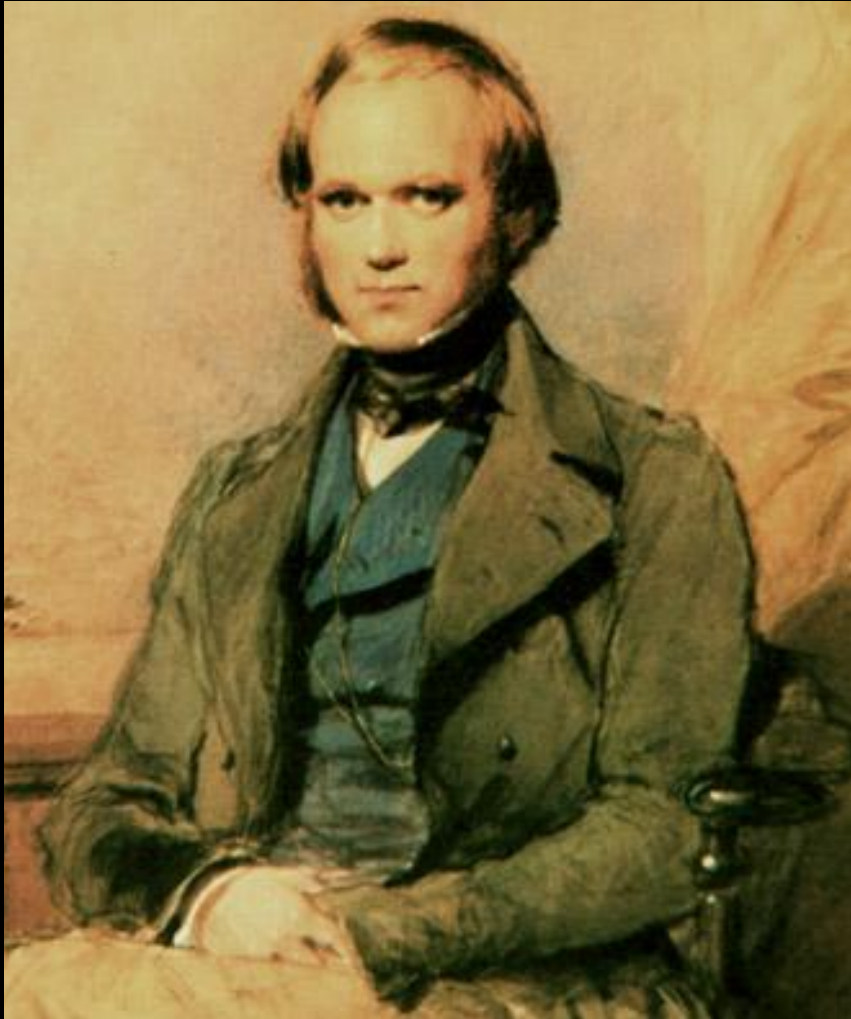


## EVOLUTION OF MAN



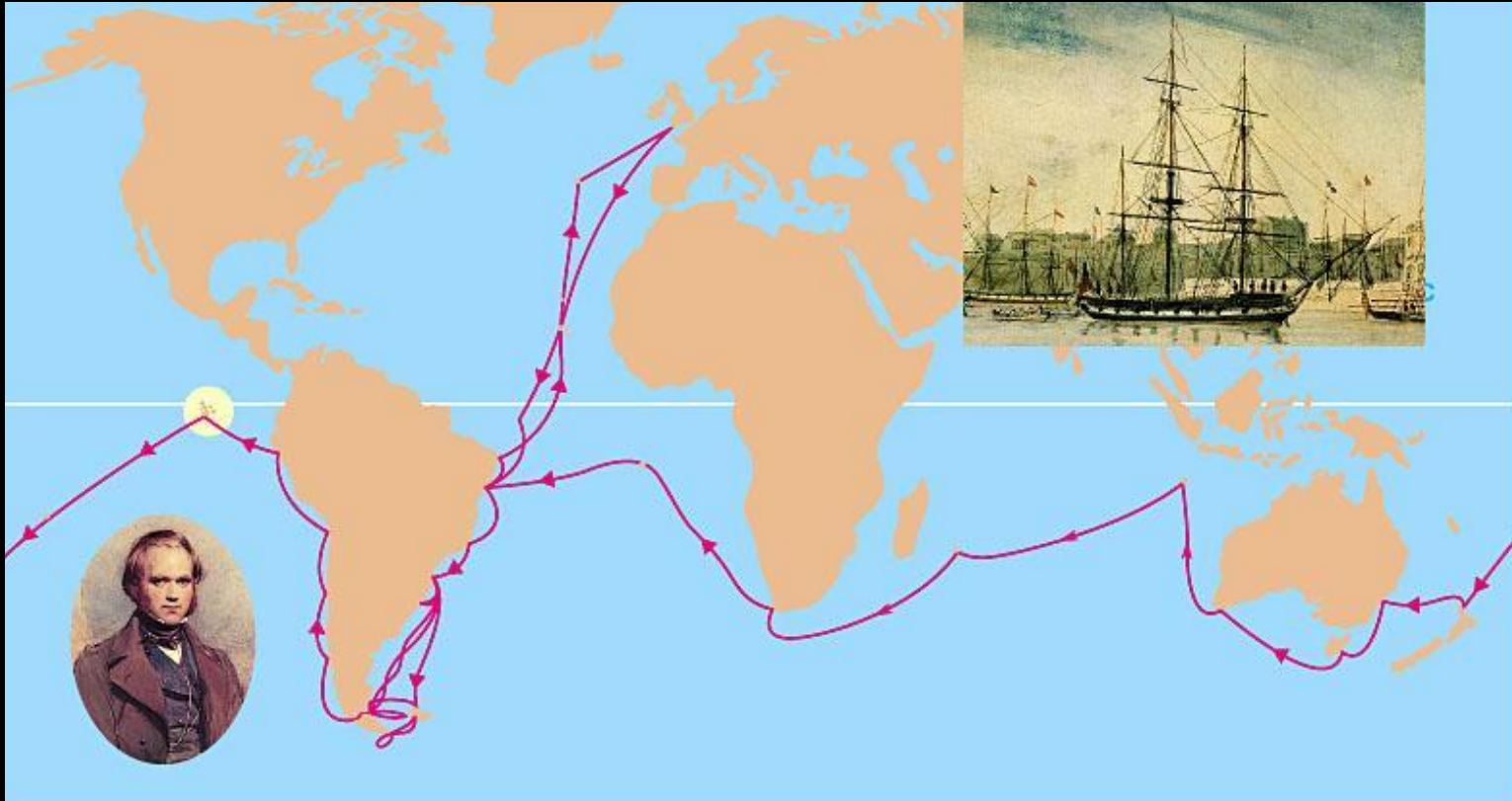
Evolution - Change over time

# Charles Darwin



- English Naturalist
- Traveled around the world on the *HMS Beagle*
- Observed many species and fossils

# Voyage of the *HMS Beagle*



During his travels, Darwin made numerous **observations** and collected **evidence** that led him to propose the Theory of Evolution



# Patterns of Diversity



Darwin noticed **patterns of diversity** amongst the plants and animals he observed during his travels.

# Adaptation to Environment

Darwin noticed that many plants and animals were **well suited to the environment** they inhabited.



# Darwin's Finches



Darwin noticed small brown birds from different islands with differently shaped beaks



# Fossils



Darwin collected **fossils**, the preserved remains of ancient organisms.

# Intro to Evolution

## Frank Gregorio



# Stop Here





# Darwin's Observations

Darwin noticed that many plants and animals were well suited to the environment they inhabited.

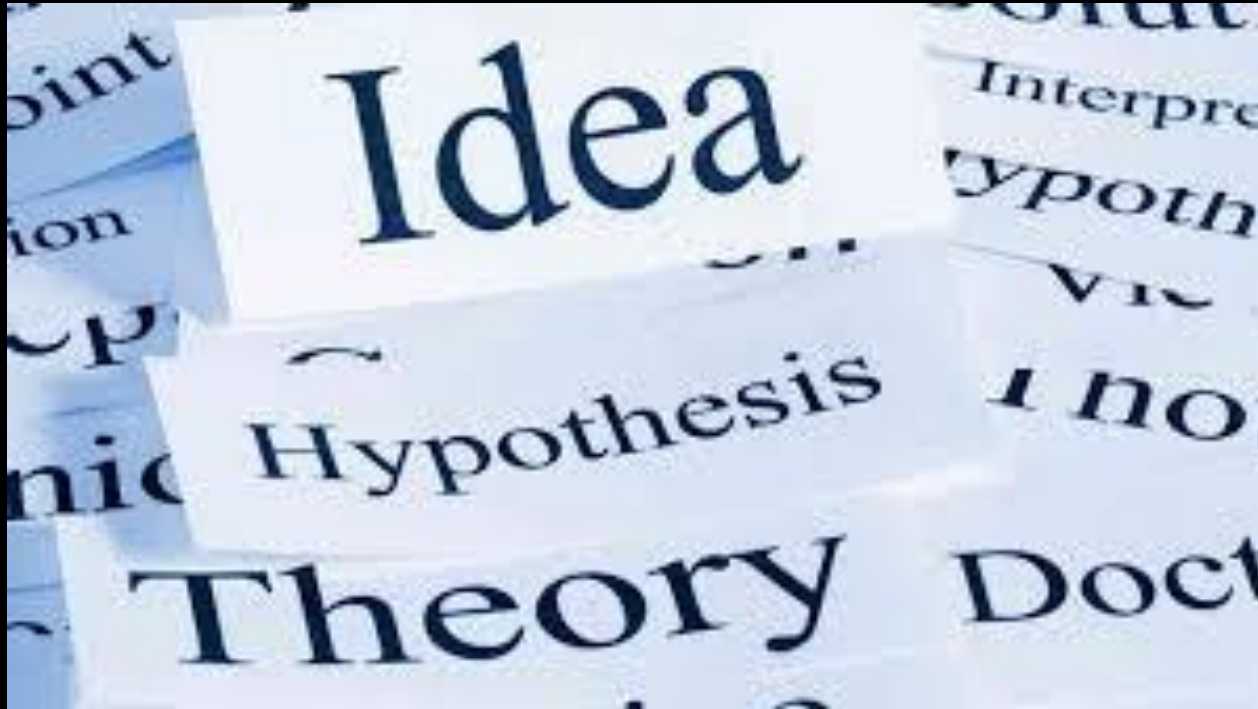


Isabela island tortoises had a short neck to reach lower vegetation



Hood island tortoises had a long neck to reach higher sparse vegetation

# Theory



**Theory** - a well supported testable explanation of phenomena that have occurred in the natural world.