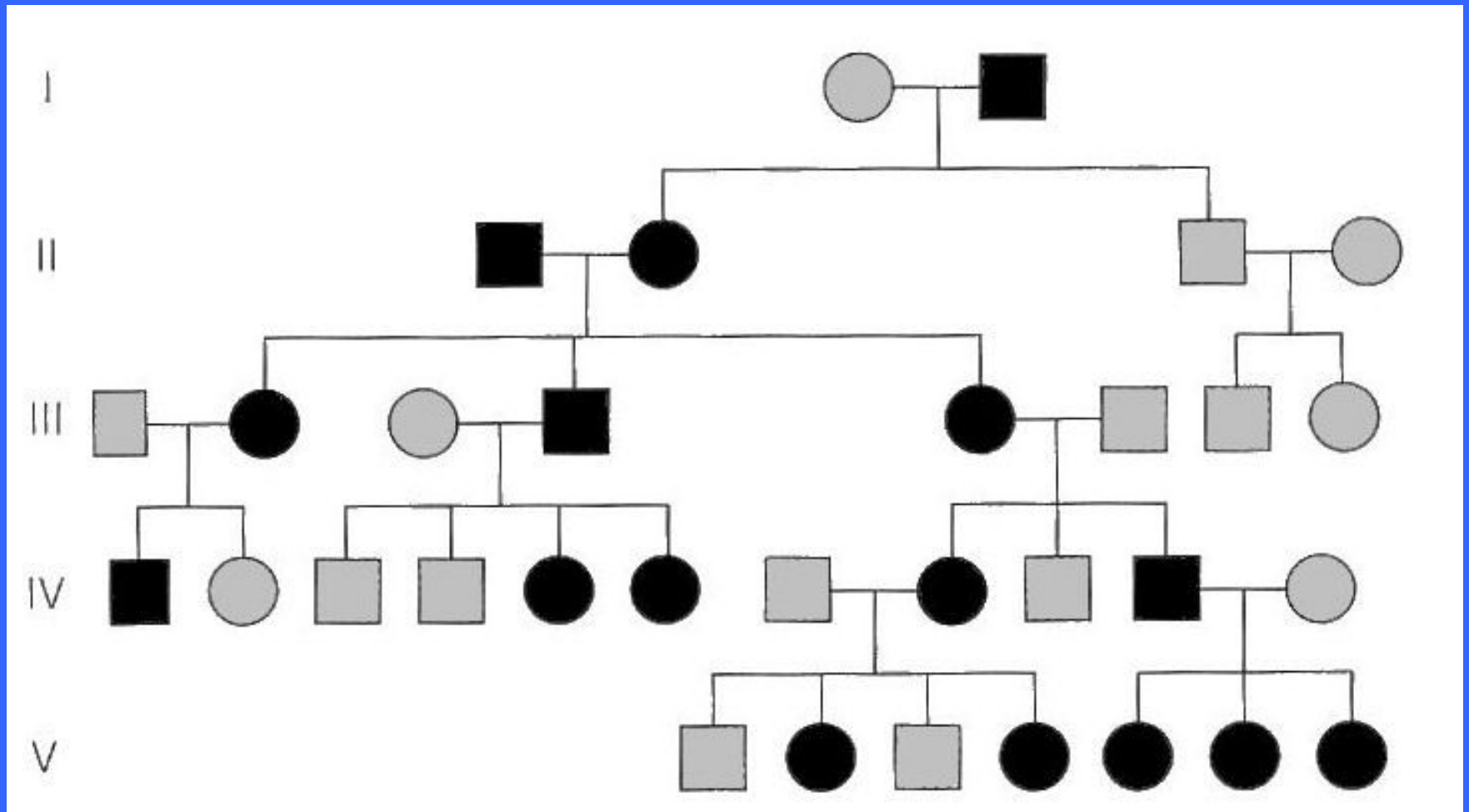


Pedigree



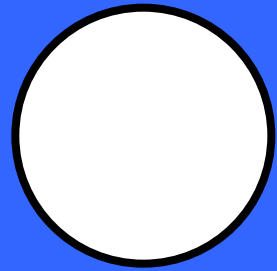
Learning Objectives

- Explain the different parts of a pedigree
- Construct a pedigree of your own family

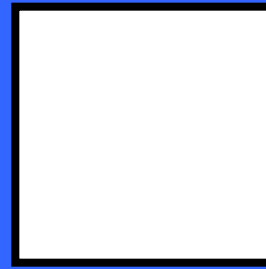
What does pedigree mean?



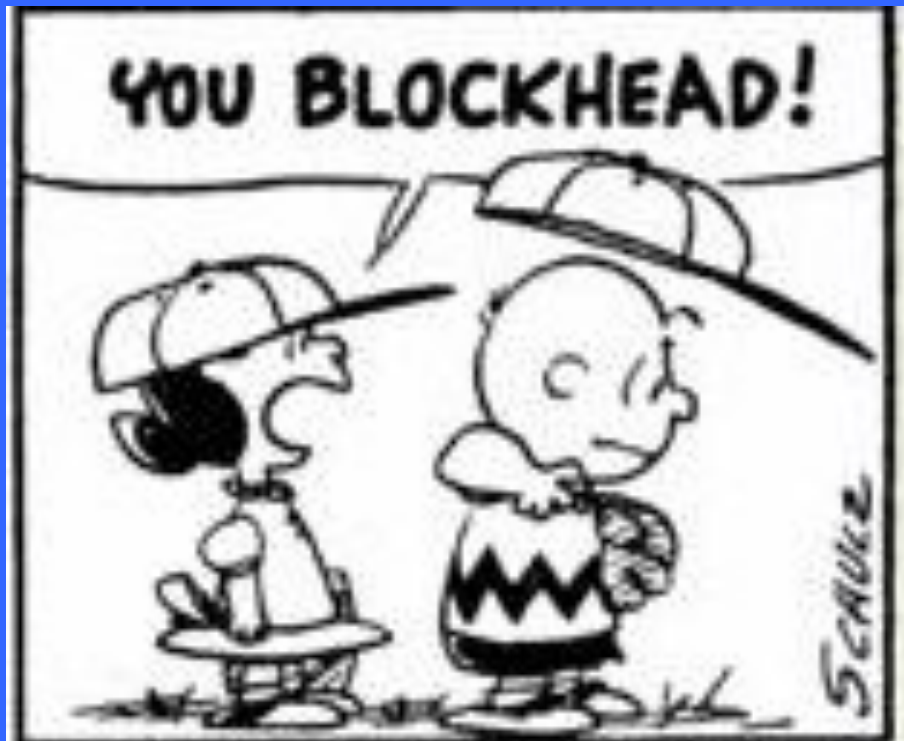
Pedigree: a diagram that traces one trait through several generations of a family



= female



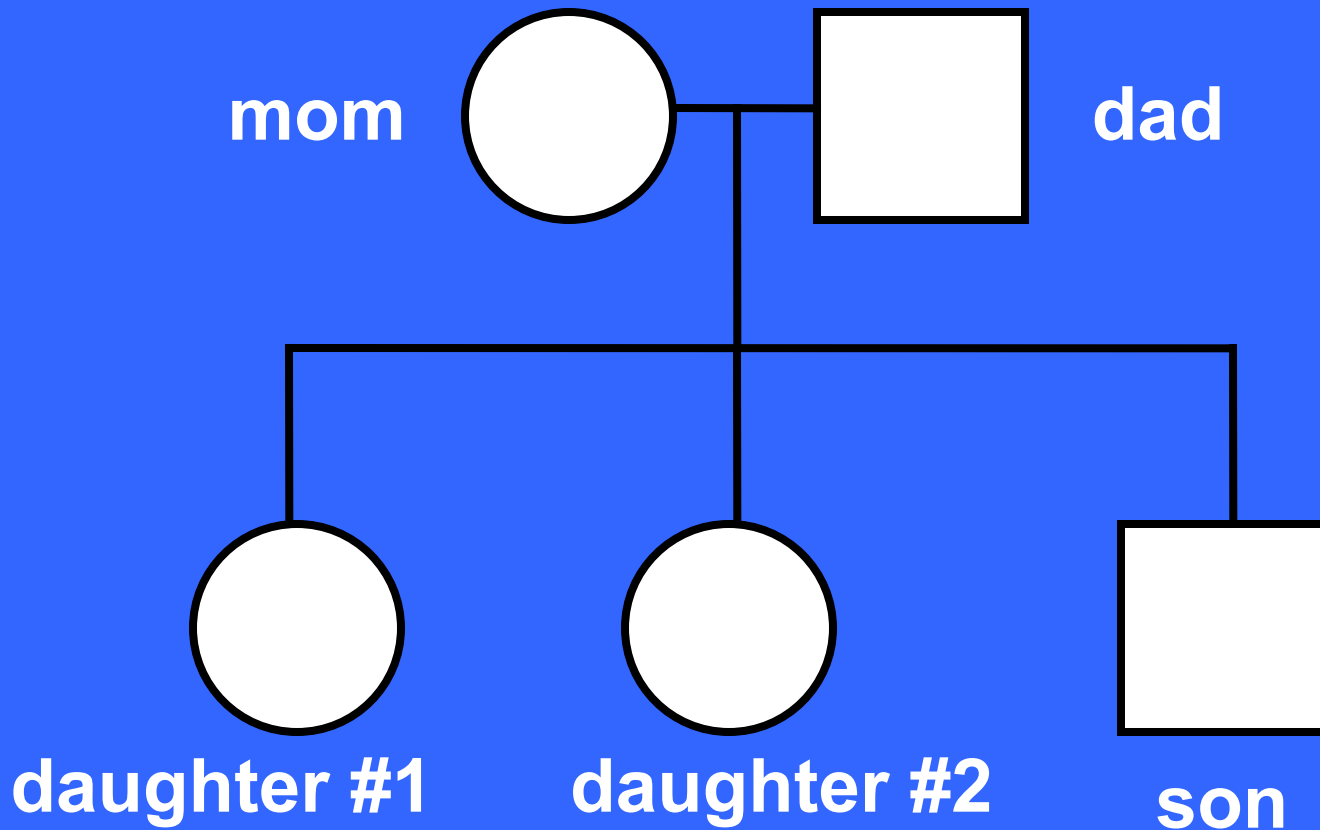
= male

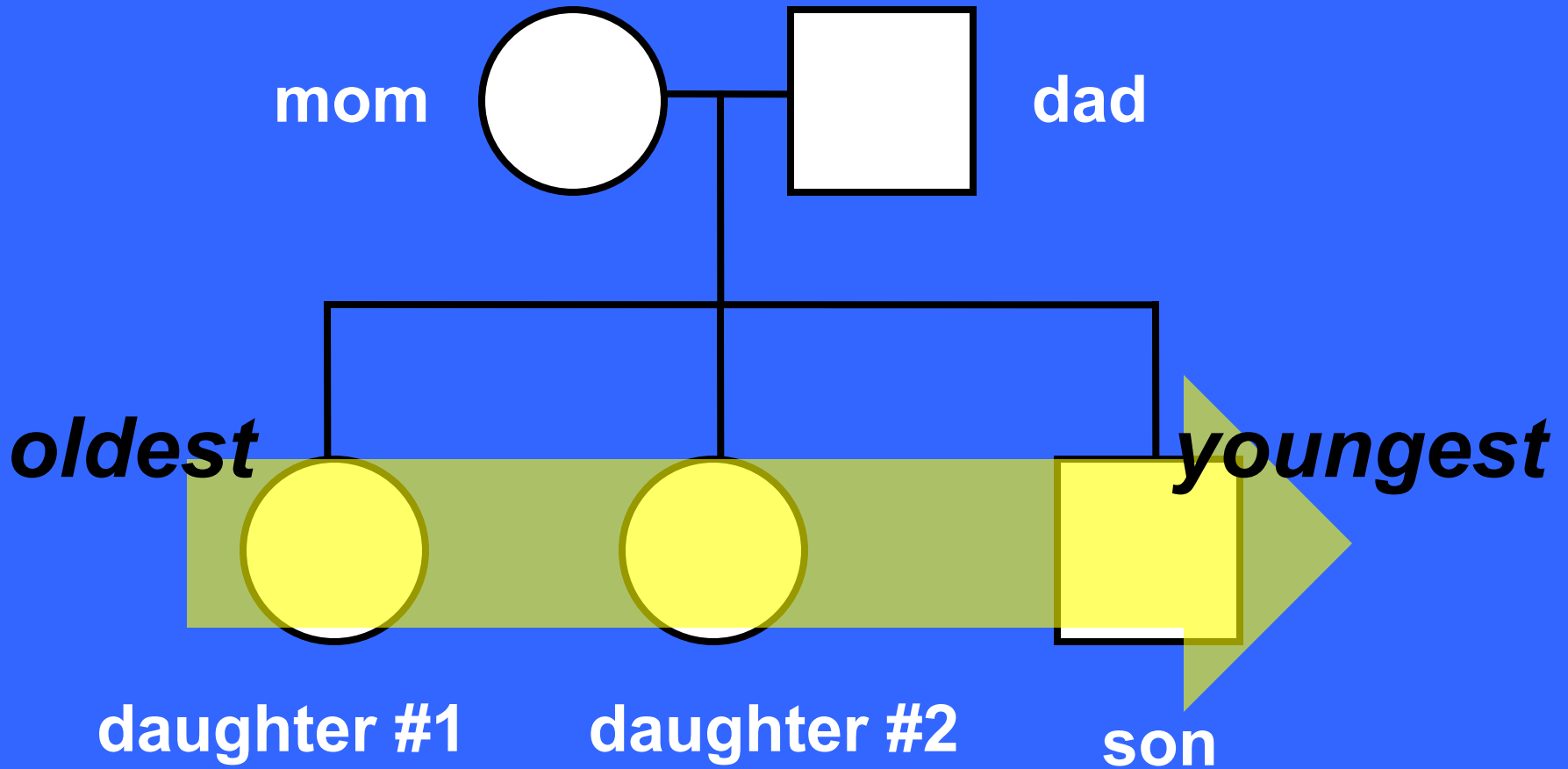


Example #1

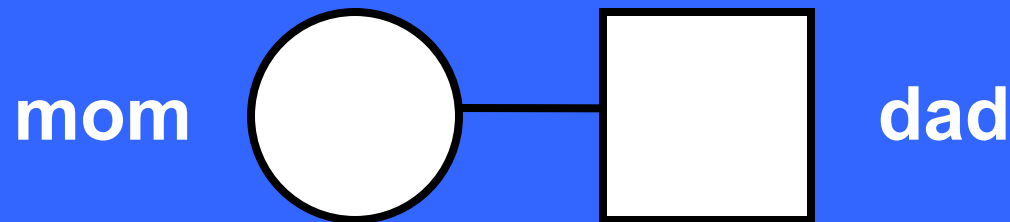
How many girls? 3

How many boys? 2





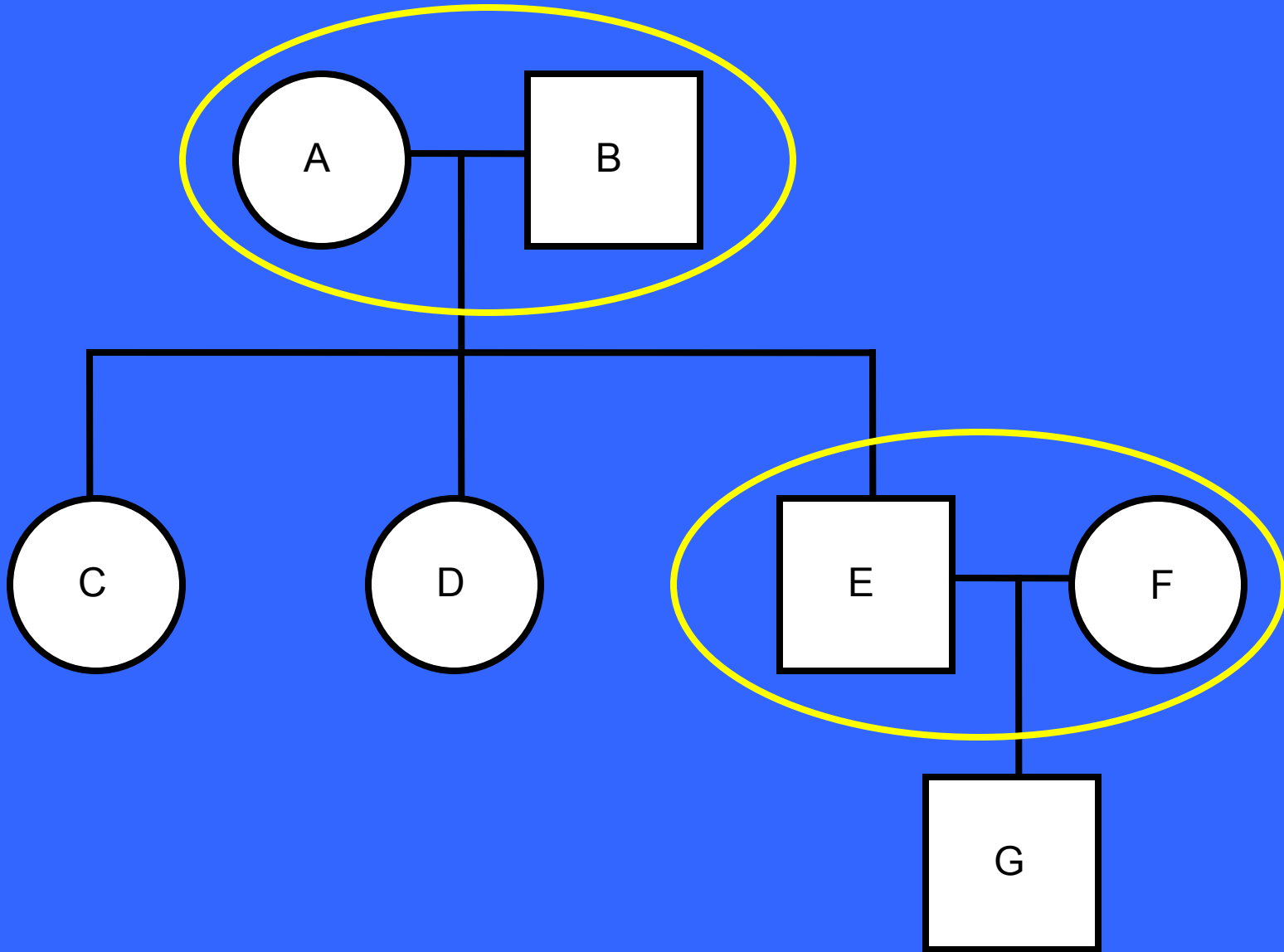
A horizontal line connecting two shapes represents a cross/marriage.



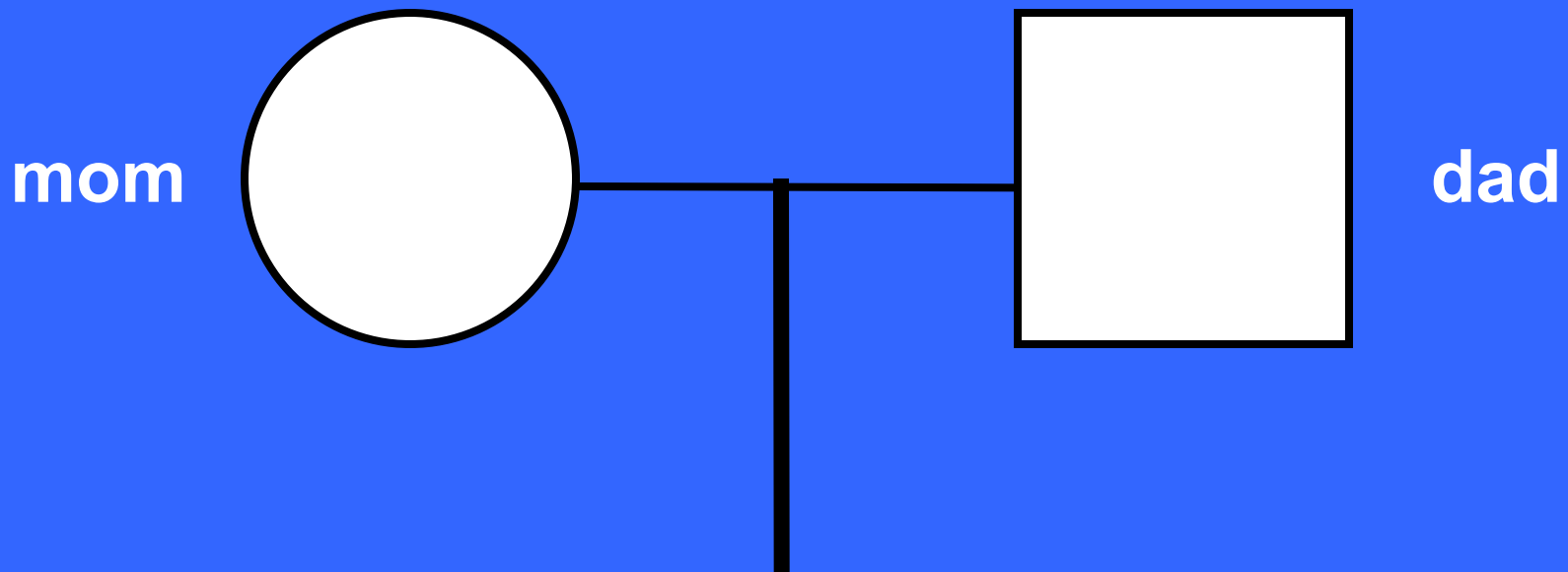
Example #2

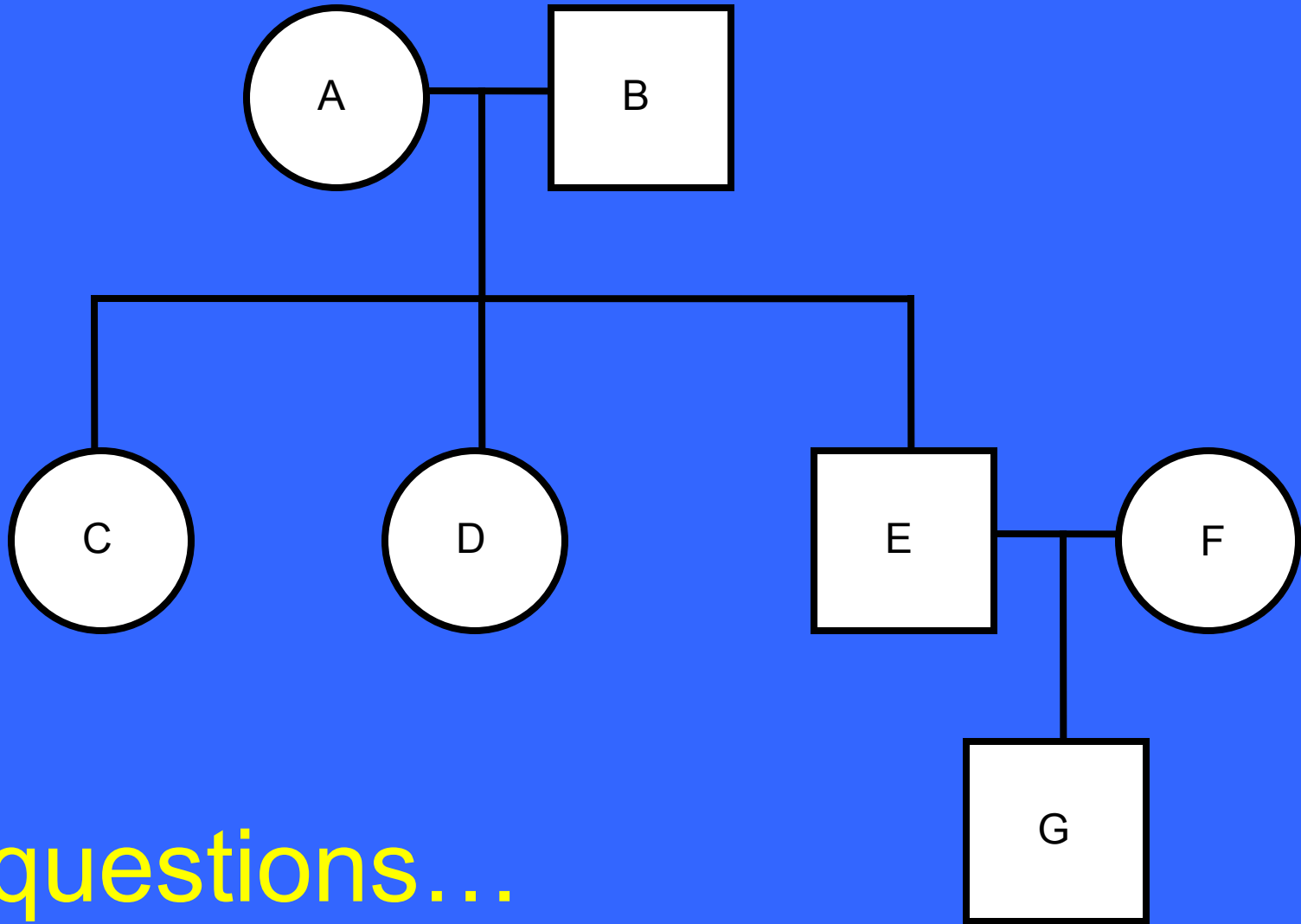
How many crosses/marriages?

2



A vertical line extending down from a marriage/cross represents that the couple has children.



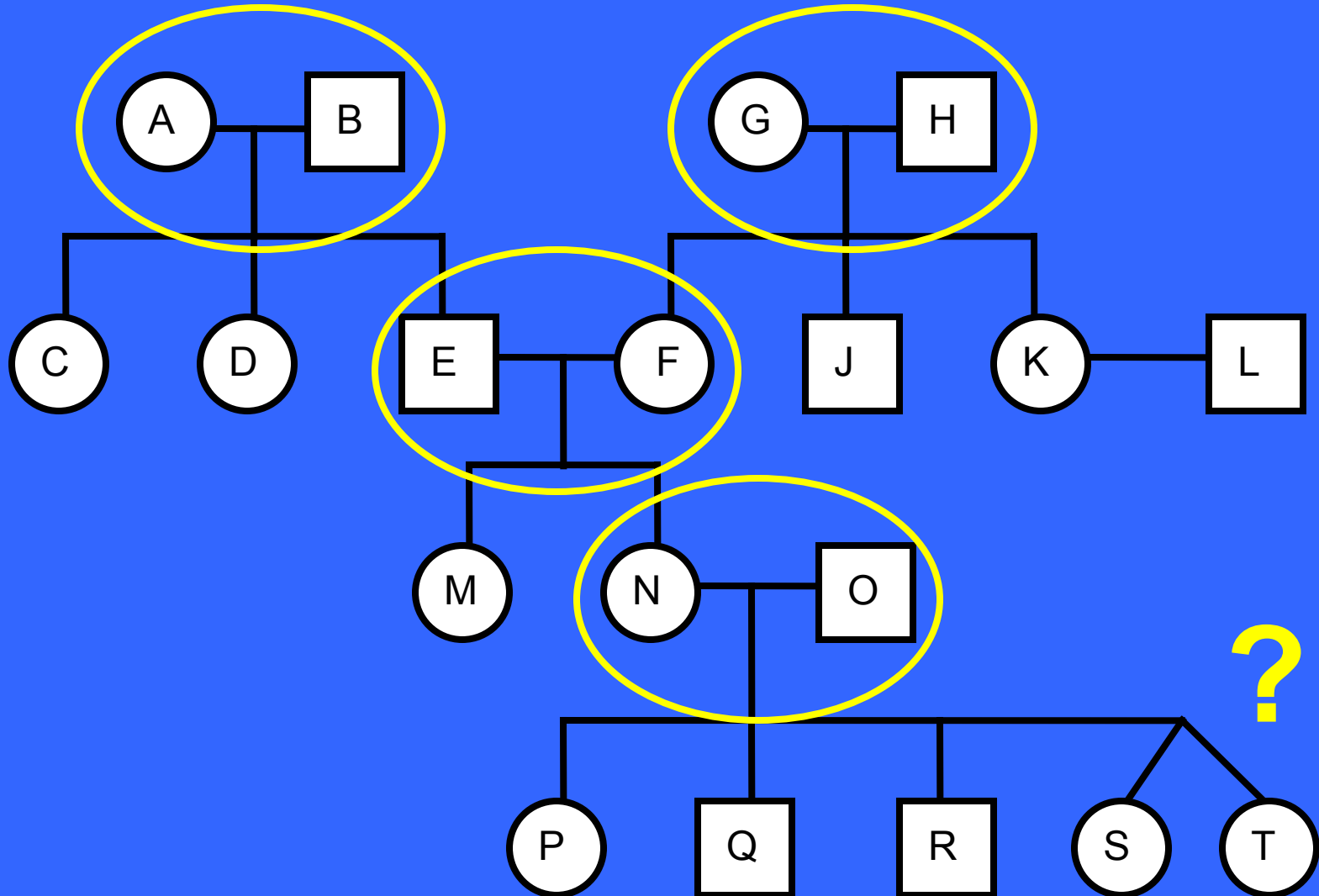


questions...

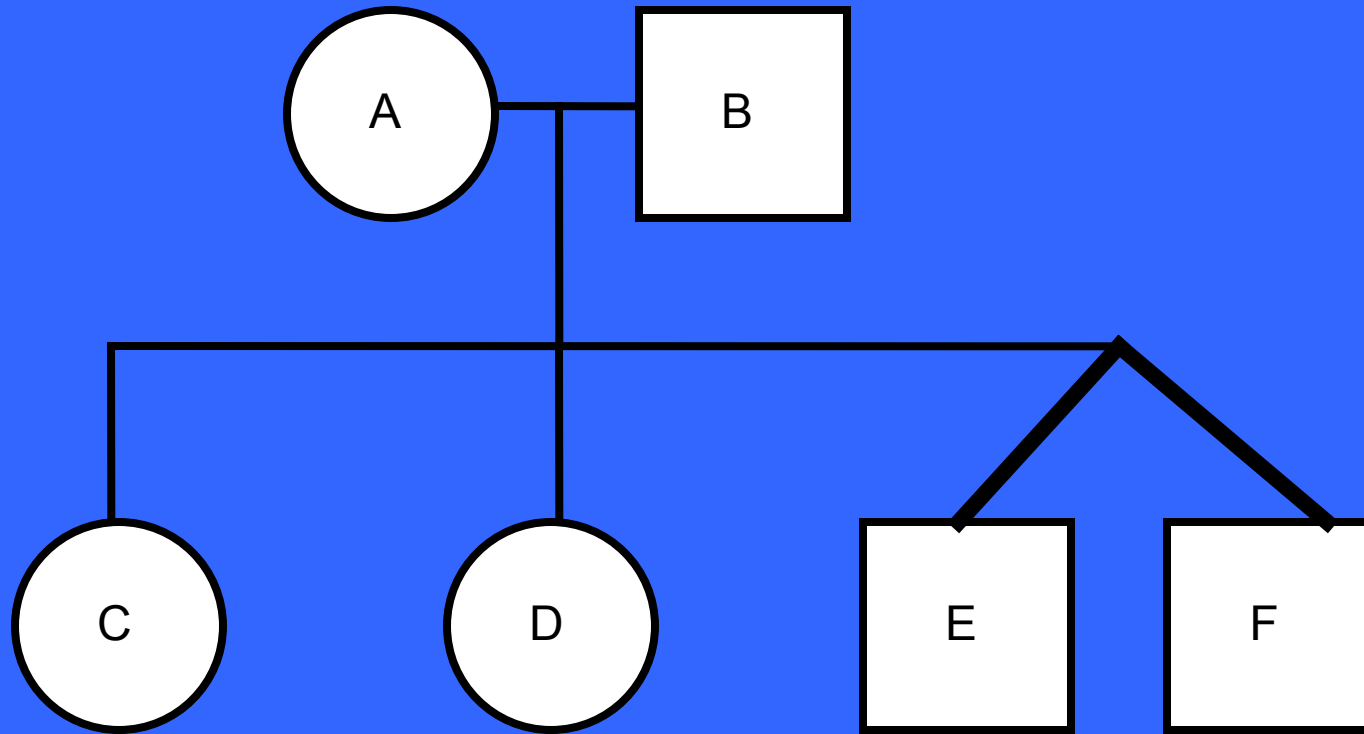
Example #3

How many couples have children?

4

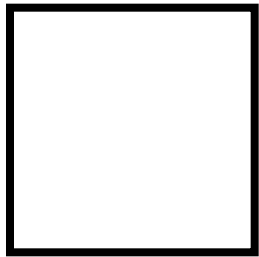


How do you show twins?

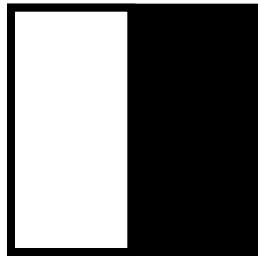


How do you show traits? Shading

(shaded = recessive)



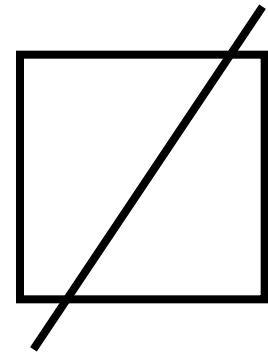
RR



Rr

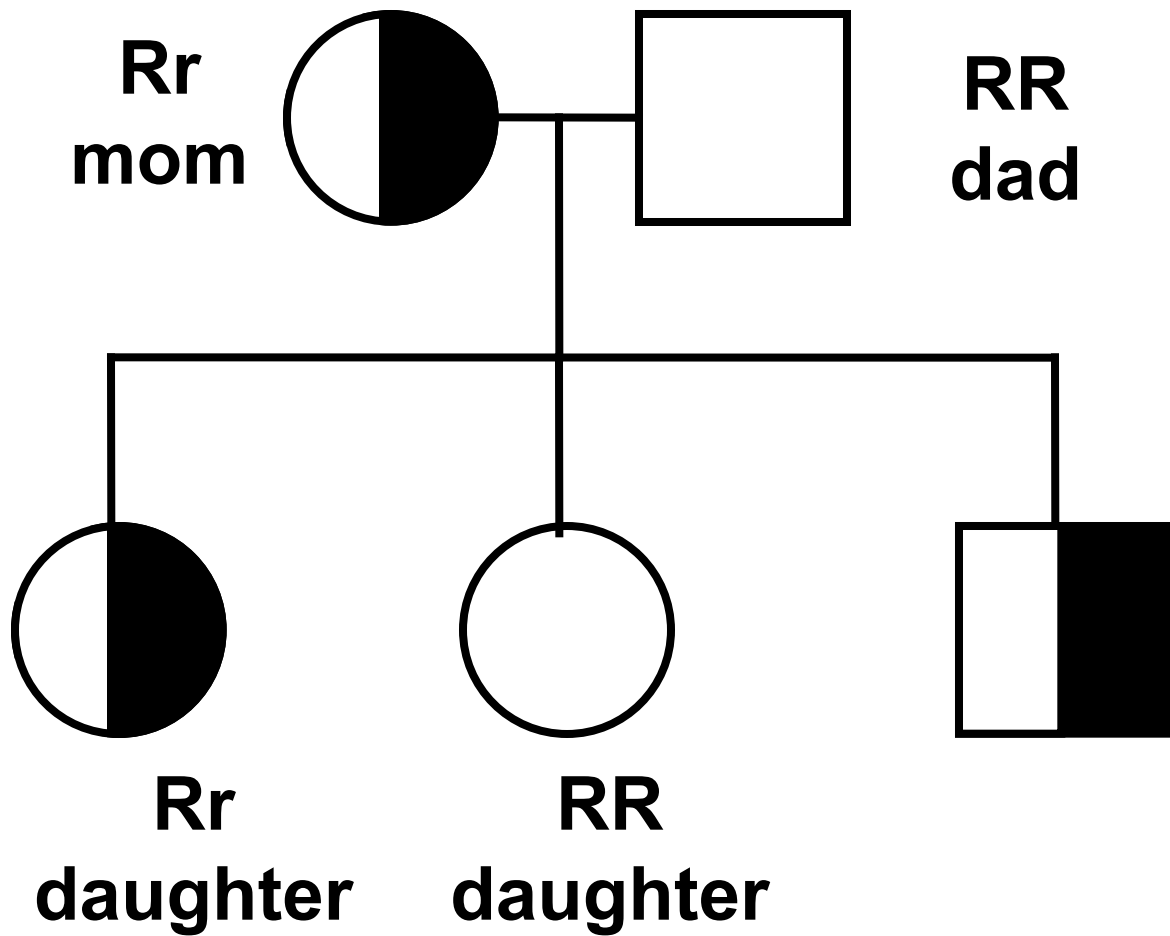


rr



mutation

**A pedigree chart follows one trait.



R = tongue roller
r = non-roller

	R	R
R	RR	RR
r	Rr	Rr

Let's Make Our Own Pedigree!

